

# white mountains region



IMAGE COURTESY OF BRIAN SOLOMON - CONWAY SCENIC RAILROAD

*The White Mountains region is New Hampshire's most spectacular natural attraction, a vast area defined by the Presidential Range and the Northeast's highest peak, Mount Washington. This region is a paradise for outdoor enthusiasts, offering everything from challenging hikes to family-friendly natural wonders.*

Key natural attractions like the Flume Gorge, an 800-foot granite chasm, and Lost River Gorge & Boulder Caves provide unique ways to experience the area's geology. The area is easily explored via legendary scenic drives, including the Kancamagus Highway, a 34.5-mile journey offering breathtaking views and access to numerous hiking trails and waterfalls like Diana's Baths and Glen Ellis Falls.

The White Mountains also blend natural beauty with a rich collection of attractions and historical experiences. The summit of Mount Washington can be reached by the thrilling Mount Washington Cog Railway or the Mt. Washington Auto Road, offering panoramic views. Iconic locations like Franconia Notch State Park offer unique experiences such as Echo Lake and the Basin, a large glacial pothole. For families, the region provides whimsical fun with theme parks such as Story Land and Santa's Village, ensuring entertainment for all ages.

The region's commitment to preserving its wilderness while making it accessible is evident in its network of trails, scenic byways, and well-maintained state parks. From the dramatic vistas of the Presidential Range to the quiet serenity of its many waterfalls, the White Mountains Region provides an unforgettable New England experience that balances rugged adventure with accessible charm.

## Points of Interest:

- Alpine Adventures (Lincoln)
- Cannon Mountain Aerial Tramway (Franconia)
- Flume Gorge (Franconia)
- Kancamagus Highway (Lincoln-Conway)
- Living Shores Aquarium (Glen)
- Loon Mountain Resort (Lincoln)
- Lost River Gorge & Boulder Caves (Woodstock)
- Polar Caves (Rumney)
- Santa's Village (Jefferson)

### *For more info on the White Mountains*

**Franconia Notch Regional Chamber of Commerce**  
603-823-2000 • [www.franconianotch.org](http://www.franconianotch.org)

**Jackson Area Chamber of Commerce**  
978-580-0905 • [www.jacksonnh.com](http://www.jacksonnh.com)

**Littleton Area Chamber of Commerce**  
603-444-6561 • [www.littletonareachamber.com](http://www.littletonareachamber.com)

**Mt Washington Valley Chamber of Commerce**  
877-948-6867 • [www.visitmwv.com](http://www.visitmwv.com)

**Twin Mountain-Bretton Woods Chamber of Commerce**  
800-245-8946 • [www.twinmountain.org](http://www.twinmountain.org)

**Western White Mountains Chamber of Commerce**  
603-745-6621 • [www.westernwhitemtns.com](http://www.westernwhitemtns.com)

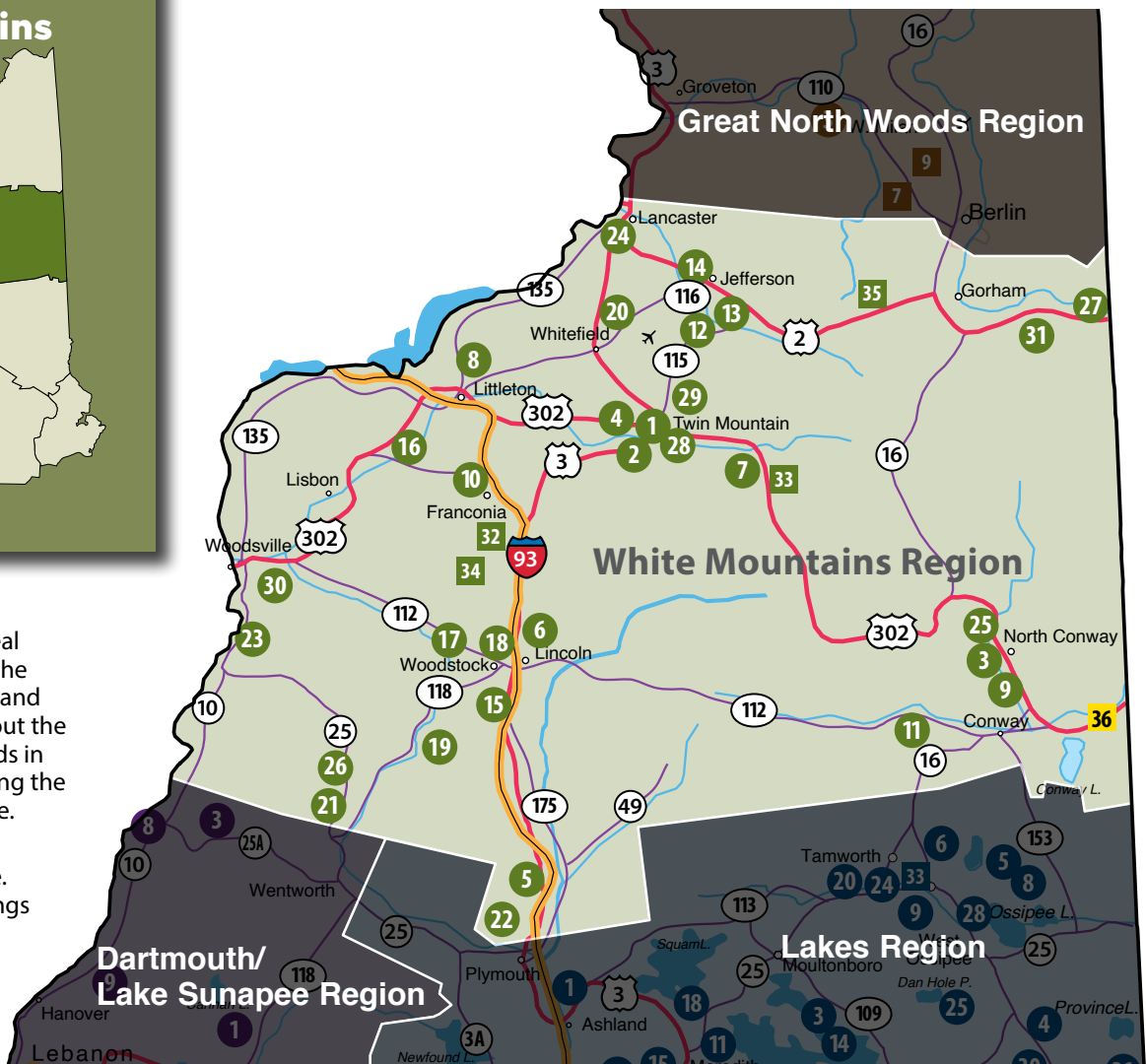
**White Mountains Visitor Center**  
603-745-8720 • [www.visitwhitemountains.com](http://www.visitwhitemountains.com)

## white mountains region



### Notes:

- Pick your ideal location on the Region Map and then check out the Campgrounds in that area using the number code.
- Locators are approximate. Refer to listings for more accurate locations.



## white mountains region private & state park campgrounds

- 1 Along the River Campground
- 2 Ammonoosuc Campground
- 3 Beach Camping Area
- 4 Beech Hill Campground & Cabins
- 5 Branch Brook Campground
- 6 Country Bumpkins Campground & Cabins
- 7 Crawford Notch Campground
- 8 Crazy Horse Family Campground
- 9 Eastern Slope Camping Area
- 10 Fransted Family Campground & RV Park
- 11 Huttopia White Mountains
- 12 Israel River Campground
- 13 Jefferson Campground
- 14 Lantern Resort (The)
- 15 Lincoln/Woodstock KOA Campground
- 16 Littleton/Franconia Notch KOA

- 17 Lost River Valley Campground
- 18 Maple Haven Campground & Cottages
- 19 Moose Hillock Camping Resort
- 20 Mountain Lake Camping Resort
- 21 Pine Haven Campground
- 22 Plymouth Sands
- 23 River Meadow Campground
- 24 Riverside Camping & RV Resort
- 25 Saco River Family Camping
- 26 Scenic View Campground
- 27 Timberland Campground
- 28 Twin Mountain Campground
- 29 Twin Mtn/Mt Wash. KOA
- 30 Twin River Campground & Cottages
- 31 White Birches Camping Park

### State Parks

- 32 Cannon Mountain
- 33 Dry River
- 34 Lafayette
- 35 Moose Brook

### RV Sales and Service

- 36 Camping World

**Note:** When making your camping reservation, be sure to mention that you found your campground in the *2026 New Hampshire Camping Guide!*



For Rates & Reservations, please call the campground or visit the campground's website.

white mountains private & state park campgrounds		Total No of Sites	Max RV Length	Hookups W/E/S	Max Amps	Dumping Station	LP Gas/ Metered (M)	Seasonal Sites	Tenting	Rental Units	Pets (leashed) (P) / Dog Park (DP)	WiFi (W) / Cable (C)	Laundry	Store	Group Area	Rec Hall (R) / Pavilion (P)	Playground	Swimming	Boating / Water Sports	Marina / Boat Launch	Fishing	Hiking Trails	Bike Trails	ATV Trails	SEASON DATES
1	Along the River	61	45	•	50		•	•	•	P	W	<10	•		R	•	P/N				<5	<5			5/15-10/12, 11/13-3/14
2	Ammonoosuc	112	44	•	50	•	•	•	•	P	W	•	•			•	P	<10	<10	<10	<10	<10			5/15-10/15
3	Beach Camping Area	105	40	•	50	•		•&H	•	P	W	•	•		P	•	N	•	<5	•	<5	•			5/15-10/18
4	Beech Hill	142	45	•	50	•	•	•&H	•	P	W/C	•	•	•	R	•	P/N	<5	<10	<5	<5	<5			5/15-10/12
5	Branch Brook	230	40	•	50	•	•	•&H	•	P	W	•	•		R	•	P/N	<10		•	•	•			4 Season
6	Country Bumpkins	50	40	•	50	•	•	•&H	•	P	W	•	•		R	•	N	<5	<10	•	<5	<5	<10		5/25-10/12
7	Crawford Notch	108	26		30	•		•&H	C/Y	P		•	•	•			N	<10		•	<5	<10			5/15-10/20
8	Crazy Horse Family	175	55	•	50	•	•	•&H		P	W	•	•	•	R/P	•	P	<5	<5	<5	<5	<10			5/15-10/12
9	Eastern Slope	238	80	•	50	•	•	•	•	P	W	•	•	•	R/P	•	P/N	•		•	<5	<5	<10		5/15-10/15
10	Fransted	96	42	•	50	•	•	•&H		P	W	•	•	•	P	•	N			•	•	<5	<10		5/15-10/12
11	Huttopia White Mountains	105					•	•	•	P	W	<10	•	•	R	•	P/N	•		•	<5	<10			5/14-10/18
12	Israel River	125	44	•	50	•	•	•&H	•	P	W	•	•		R	•	P/N	<10	<10	•	<5	•	<10		Year Round
13	Jefferson Campground	77	60	•	50	<10	<10	•&H		P	W	•	•			•	P	<10	<10	<5	<5	<5			5/15-10/15
14	Lantern Resort (The)	90	50	•	50	•	<5	•&H	•	P	W	•	•	•	P	•	P	<10		<10	<5				5/24-10/14
15	Lincoln/Woodstock KOA	140	65	•	50	•	•	•&H	•	P/DP	W	•	•	•	R/P	•	P	<5		•	<5	<5	<5		5/1 - 10/18
16	Littleton/Franconia Notch KOA	72	45	•	50	•	•	•&H	•	P/DP	W/C	•	•	•	R/P	•	P/N	•		•	<10	<5	<5		5/1-10/13
17	Lost River Valley	161	55	•	50	•	•	•&H	•	P		•	•	•	R	•	N	•		•	•	•	<5		5/9-10/21
18	Maple Haven	100	40	•	50	•	<5	•&H	•	P	W	<5	•			•	N			<5	<5	<5			5/15-10/18
19	Moose Hillock	282	50	•	50	•	•	•&H	•	P	W/C	•	•		R/P	•	P/N	<5	<10	•	•	•	<5		5/15-10/11
20	Mountain Lake	100	45	•	50	•	•	•&H	•	P/DP	W/C	•	•		R	•	P/N	•	<5	•	<5	<10			5/15-10/15
21	Pine Haven	128	45	•	50	•	•	•&H	•	P/DP	W/C	•	•	•	P	•	P/N	<5	<5	<5	<5	<5	<5		5/15-10/15
22	Plymouth Sands	80	40	•	30	•	<10	•&H		P		<5	<5				N	<5	<10	•	<5	<5	<10		5/1-10/12
23	River Meadow	123	45	•	50	•	•	•	•	P	W/C	•	•	•	P	•	P/N	•	<10	•	<5	<5	<5		5/1 - 11/1
24	Riverside Camping	100	Any	•	50	•	•	•&H	•	P	W	•	<5	•	P	•	P/N	•	•	•	•	•	<10		5/10-10/15
25	Saco River	230	100	•	50	•	•	•	•	P/DP	W/C	•	•	•	P	•	P/N	•	<5	•	•	<5	<10		5/22-10/13
26	Scenic View	86	40	•	50	•	•	•	•	P	W	•	•		R/P	•	P/N	<5	<5	•	<5	<5			5/15-10/12
27	Timberland	92	45	•	50	•	<5	•&H	•	P	W/C	•	•	•	R/P	•	P/N	•	<5	•	•	<5	<10		5/8-10/12
28	Twin Mountain	70	42	•	30	•	<5	•&H	•	P		<10	•			•	P/N	<5	<5	•	<5	<5	<5		5/9-10/13
29	Twin Mtn/ Mt Washington KOA	108	77	•	50	•	•	•	•	P	W/C	•	•		P	•	P			<5	•	<10			5/2-10/13
30	Twin River	90	45	•	50	•	•	•&H	•	P	W/C	•	•	•	R/P	•	P/N	<5	<5	•	<5	•	•		5/1-10/15
31	White Birches	110	65	•	50	•	•	•&H	•	P	W	•	•	•	R/P	•	P/N	•	•	•	•	<10	<5		5/5-10/25
STATE PARKS																									
32	Cannon Mountain	7	40	•	30	•	<10			P		<10	<10			•	N	•	<5	•	•				4 Season
33	Dry River	38	40					•		P		<10	<10							•	•				May-October
34	Lafayette	96	25			<10		•				<10	•		•	•	N	<10		<10	•				4 Season
35	Moose Brook	59	40			<10		•		P		<10	•			•	N			•	•	•			May-October

Seasonal rental only

• = Onsite <5 = Located less than 5 miles from campground <10 = Located less than 10 miles from campground

P=Pool, N=Natural, Rental Units (Cabins, Trailer, Yurts, Teepee, etc.), H=Hammock Tenting

Image courtesy of Colleen Eliason Photography



## 1 Along the River Campground



373 Route 302 West • Twin Mountain, NH 03595 • (603) 846-1026

stay@alongtheriverNH.com • www.alongtheriverNH.com

*Ideally located on the Ammonoosuc River between Crawford and Franconia notches. We are in hiker's paradise and centrally located to many family attractions.*

**Directions** We are on Route 302, 0.7 miles west of the intersection of Rte. 3 and Rte. 302 in the village of Twin Mountain (Carroll), NH. From the south, take I-93 north to exit 35, follow route 3 north to the junction of Rte. 302, turn left (west on Rte. 302), campground is .07 miles on the left. From the north, take I-93 south to exit 40, turn right onto Rte. 302 East, campground is 10 miles on the right.

**Amenities** Seasonal and extended stay (week or more) RV sites in sun or shade, 30 & 50 amp electric, water, sewer, Wi-Fi, fire pit, and picnic table. We have 14 river view tent sites, 5 primitive tent sites, 34 RV sites, and 8 cabins. Quiet hours 10 pm to 8 am. No large groups, no parties. Riverside picnic area. Cool off in the clean in-ground pool or wade, fish, sit, or tube in the river (depends on water level). We are dog friendly, must be leashed (off-leash in the river) and cleaned up after. No barkers, biters, or aggressive dogs allowed. The bath house is clean with hot showers. For the kids we have a mining sluice, a playground area with a large sandbox, and a rec-hall. There is an on-site store with ice, firewood, tees and sweatshirts, camping blankets, convenience items, and local information. Summer season is mid-May to early October. Winter season mid-November to March. Direct snowmobile trail access!

SEE AD ON PAGE 49

## 2 Ammonoosuc Campground

149 US Route 3 South, Twin Mountain, NH 03595 • (603) 846-5527

ammonoosuccg@twc.com • www.ammonoosuccampground.com

**Directions** I-93 Exit 35 continue on Route 3N. Approximately 1/4 mile south of Junction Route 3 & 302.

**Amenities** All 110 sites are wooded and all tent sites have shelter, tables and fireplaces. We have a dump station, laundry, modern facilities, playground, large heated pool w/ADA, Wi-Fi, pool lift available, and pets must be on a leash. In the winter we have heated restrooms and direct access to groomed snowmobile trail systems.

SEE AD ON PAGE 48

## 3 Beach Camping Area

776 White Mountain Hwy, Conway, NH 03818 • (603) 447-2723

reservations@beachcampingnh.com • www.beachcampingnh.com

*The Beach Camping Area offers Saco River waterfront camping in the White Mountains of New Hampshire. A huge sandy beach awaits your lawn chair or blanket with refreshing swimming in the crystal-clear waters of the Saco River. Many campsites are right along the river or beach, some offering the cool shade of tall trees, while others are open and sunny. Some beach camping on the Saco River even offers mountain views! The Beach Camping Area is also a great place for families. There's a playground for kids and a recreation pavilion. Located one mile from North Conway, there is tax-free shopping just minutes away. Canoe, kayak, and tubing rentals close by and of course all the great activities that the Mt. Washington Valley has to offer.*

**Directions** Located 1 mile from North Conway, 1½ miles north of Conway on Route 16

**Amenities** 120 large shady riverfront sites, all with 3-way hookups, most 30/20 amp, some 50 amp, free hi speed fiber optic wireless internet, picnic tables and fire pits, large beach, swimming, fishing, canoeing, playground, store, ice, wood, laundry, LP gas (metered), dump station, modern facilities. Outlet shopping, grocery stores less than a mile away. PETS ON LEASH (\$)

SEE LISTING ON PAGE 48

## BEECH HILL CAMPGROUND & CABINS A Family Campground



50 amp sites



Enjoy our indoor heated pool regardless of the weather!

Central to area attractions

Full Hookup Sites Include Cable • Wi-Fi Available • Store & Gift Shop • Laundry • Propane  
Open mid May thru mid October • Weekly, Monthly & Seasonal Rates



(603) 846-5521

PO Box 129 Twin Mountain, NH 03595

Email: camping@beechhill.com • www.beechhill.com



#### 4 Beech Hill Campground & Cabins



*Enjoy our heated indoor pool, regardless of the weather!*

970 Route 302 West, Twin Mountain, NH 03595 • (603) 846-5521  
camping@beechhill.com • www.beechhill.com

*A quiet family campground located in the heart of the beautiful White Mountain Region and surrounded by over 1,000 square miles of forest. It can offer the camper seclusion but is still convenient to all area attractions, including various hiking trails for all ages and skill sets. Whether a camper wants to relax and enjoy the onsite amenities or go off and experience the wonderful area! Come camp with us, there's something for everyone!*

**Directions** 1.8 miles west of intersection of US Route 3 and US Route 302 on Route 302

**Amenities** 142 wooded sites, secluded tent sites, water/electric sites, 3-way hookup sites w/cable some with 50-amp, cabin rentals (sorry, no pets in cabins). Enjoy our indoor heated pool, regardless of the weather! Game room, playground, laundry, free hot showers, metered propane, firewood, ice, and groceries. RV camp supplies in our store and leashed pets are allowed in the campground. Free Wi-Fi available. Giant chess and checkers, basketball, volleyball, horseshoes, bocci, and shuffleboard.

**SEE AD ON PAGE 47**

#### 5 Branch Brook Campground

97 Branch Brook Road, Campton, NH 03223  
(603) 726-7001 • www.branchbrooknh.com

*Branch Brook pulls out all the stops when it comes to creating a fun family atmosphere. We host a variety of activities and entertainment for all ages on a beautiful riverfront property. There is always something to do! Family memories are created here because we put the FUN in camping!*

**Directions** Rte. 93 to exit 28, Rte. 49 West about 1 mile on right

**Amenities** 155 acres, 230 sites, full service, handicap friendly, W/E/S hookups, 20/30/50-amp, primitive tent sites, Wi-Fi, free hot showers, LP, laundry, dump station, rec hall, playground, nature trails, swimming (multi feature pool and river), tubing, fishing, canoe and free activities.

#### 6 Country Bumpkins Campground & Cabins

218 US Route 3, Lincoln, NH 03251 • (603) 745-8837  
info@countrybumpkins.com • www.countrybumpkins.com

*Country Bumpkins Campground is dedicated to providing clean, comfortable, and family-friendly accommodations in the heart of the beautiful White Mountains. Great location near Franconia Notch State Park and all the attractions of the White Mountains. Within a mile of Whales Tails water park and Clark's Trading Post. Situated on the junction of Pemi River & Harvard Brook with a duck pond in the center.*

**Directions** From US 93: Take Exit 33, Route 3 South, entrance is 1/2 mile on left (Country Bumpkins Campground Road). From VT: 112E to the light in North Woodstock. Take a left onto 3 North. We are 2 miles up on your right. From Maine: Take 112W to the 1st traffic light in Lincoln, take a right to end, right onto 3 North, 1/2 mile up on right. 218 DW Hwy.

**Amenities** We have 6 well-equipped cottages, 1 travel trailer rental, 1 rustic cabin, and a campground with 45 sites for both tent and RVs. We can accommodate larger campers (40') on some sites with full hookup 30/50 amp. Some RV sites are water and electric only (30 amp). We have excellent Wi-Fi throughout the campground allowing streaming from anywhere. Tent sites are all riverfront. We have a playground, game room, small laundry, LP gas fill station, bathhouse with free hot showers, and a river for fishing and wading. Pets are allowed on a leash. Reservations required. Open Memorial Day through Columbus Day.

#### 7 Crawford Notch Campground

1138 US Route 302, Hart's Location, NH 03812 • (603) 374-2779  
camp@crowfordnotch.com • www.crawfordnotchcamping.com

**Directions** 7 mi. northwest of Bartlett, 15 mi. southeast of Twin Mountain  
**Amenities** Riverfront camping, 1 mile on the Saco River, 100 acres of secluded and wooded camping, 94 sites, some with wtr. and/or elect., some carry-in/ carry-out, 10 camping cabins, 2 yurts, all with picnic tables and fire pits, 60 acres of hiking/biking nature trails, river tubing/wading, fishing, modern bath houses, laundry, dump station, general store with all the basics, pet friendly.

**SEE LISTING ON PAGE 47**

## Great Family Camping

# Ammonoosuc Campground

603-846-5527

Twin Mountain, NH

www.ammonoosuccampground.com

**SUMMER**

- May 15 - Oct. 15
- Swimming Pool
- Shaded Sites
- Minutes From Attractions

**WINTER (Seasonal Only)**

- Nov. 15 - March 15
- Snowmobile Trails
- Heated Rest Room
- Office Hours: 9am-9pm

Where you want to be  
in the White Mountains...  
**CLOSE to Everything!!!**

Twin Mt.  
Ammonoosuc  
Campground

#### 8 Crazy Horse Family Campground

788 Hilltop Road, Littleton, NH 03561 • (603) 444-2204  
mail@crazyhorsenh.com • www.crazyhorsenh.com

*Crazy Horse Family Campground is a 3-season campground nestled in the White Mountains. There is something for everyone, from planned weekend activities for kids, Corn Hole & Horseshoe Tournaments for adults, lake access with your kayak or boat, and swimming within 1/2 mile of the campground. Pet Friendly! We have the perfect spot for everyone! Come enjoy your slice of Heaven!*

**Directions** 2 miles off I-93 Exit 43. Right off ramp, 1st right on to St. Johnsbury Rd, right on to Hilltop Road, 2 miles down on right.

**Amenities** 175 forested and open sites. Sparkling clean facilities, big rigs, full hook-up sites with 30/50-amp service, big new beautiful swimming pool, wooded tent and pop-up sites with water/electric, and Wi-Fi.

New Hampshire *Loves* Campers®



## 9 Eastern Slope Camping Area

584 White Mountain Highway, Conway, NH 03818  
(603) 447-5092 • office@easternslopecamping.com  
www.modernamericacampgrounds.com/new-hampshire

*The perfect family camping destination in the North Conway area, so close to all of the region's finest family attractions, restaurants, hiking and bicycling trails, and tax-free outlet shopping.*

**Directions** Rte 16 in Conway, NH, across from Banner's Restaurant, next to Leavitt's Bakery. 2 miles South of Settler's Green Outlets, 2 miles North of the junction of Rte. 16 & Rte. 112. Big yellow sign! Portsmouth & Portland 65 miles.

**Amenities** 230 sites on 36 acres, 48 pull-thru sites. Over 100 full hook-up sites with cable. We accommodate big rigs, class A, class C, travel trailers, pop ups, travel vans, and tents. All sites have fire rings, picnic tables, water, and electric. Most sites have wooden canopies over the picnic tables. Family-oriented, free wi-fi, canoe and kayak rentals, and a shuttle. Cozy camping cabins, fishing, swimming, game room, recreation hall, waterfront area, outdoor grills available, heated outdoor pool, playground, riverfront access, hayrides, make your own sundaes, kids activities, and themed weekends.

## 10 Fransted Family Campground and RV Park

974 Profile Road, Franconia, NH 03580 • (603) 823-5675  
info@franstedcampground.com • www.franstedcampground.com

*Fransted...Where memories are made. Come experience pristine camping with our river at your feet and the scenic White Mountains as your backdrop. A friendly, peaceful campground just minutes from Franconia Notch where you will find the best hiking and White Mountain attractions in NH. We offer five different types of campsites for your camping pleasure.*

**Directions** NB I-93 thru Franconia Notch Exit 37, left off ramp, left on Rte 18 (S), entrance 1500' on right. SB I-93, Exit 38 right off the ramp, left Route 18 (S), entrance 1.5 miles on right

**Amenities** 95 Sites - Wooded and river front tent sites some w/water and electric. Trailer sites, 30/50-amp service, up to 42 ft, full hookups. Free WiFi, modern bathhouses, store, laundry, LP, hiking, fishing, swimming/tubing, mini-golf, recreation field, volleyball, basketball, playground, pavilion, pets on leash

## 11 Huttopia White Mountains

57 Pine Knoll Rd, Albany, NH 03818 • (603) 447-3131  
whitemountains@huttopia.com

www.canada-usa.huttopia.com/en/site/white-mountains

*Discover nature as you've never experienced it before. Huttopia, a French glamping brand, invites you to relax in comfortable tents and cabins surrounded by trees at its White Mountains location. Bordered by a lake, the resort is equipped with a heated swimming pool, an Airstream food truck and many sports facilities that will provide activities for friends and families alike. Enjoy the outdoors "à la française", with a cup of espresso or a glass of wine*

**Directions** By Route 16, between Conway and Chocorua. A Huttopia totem is located at the entrance of the resort

**Amenities** WiFi, store, pets allowed (leashed), group area, tenting, rec hall/game room, rental units - cabin, playground, swimming pool, swimming natural, boating/canoeing, fishing. Sorry, no RVs.

SEE LISTING ON PAGE 47



# Have you booked yet?



**alongtheriverNH.com**  
**603-846-1026**



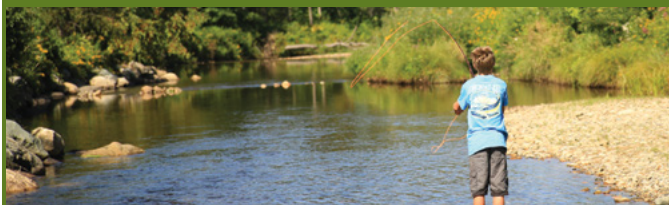


Summer: Mid-May to Mid-October ~ Winter: Mid-November to Mid-March

When was the last time you had  
an especially memorable camping experience?



## 12 Israel River Campground



111 Israels River Road, Jefferson, NH 03583 • (603) 586-7977  
camping@israelrivercampground.com • www.israelrivercampground.com  
*Discover the natural beauty New Hampshire has to offer at Israel River Campground. Start your day with spectacular views of the Presidential Mountain Range and the Mount Washington Observatory. Swim or fish in the river, relax by the pool, or play a game of horseshoes. Family relaxation and fun is what we are all about. Whether you have a tent or a camper, book your site today, or stake your claim for the season. Isn't it time to get away from it all?*

**Directions** 8 miles from Route 3, 2½ miles from Route 2

**Amenities** 125 grassy tent and RV sites with water/electric/sewer, all sites are mostly 30-amp service but some are 50 amp. We have fireplaces, a pool, camp store, laundry, recreation hall, new playground, horseshoes, fishing, hunting, and hiking trails. Wi-Fi is limited to the rec hall building only, it is not throughout the whole campground.

*Image courtesy of Colleen Eliason Photography*



## 13 Jefferson Campground

*Close to all White Mountain attractions*



1468 Presidential Highway, Jefferson, NH 03583 • (603) 586-4510  
info@jeffersoncampground.com • www.jeffersoncampground.com  
*Amazing mountain views with great Wi-Fi! Only minutes away from Santa's Village and close to all the White Mountain attractions.*

**Directions** From Interstate 93, take US -302 to NH-115 N, turn left onto US-2 W, and in about a half a mile Jefferson Campground is on the left.

**Amenities** 77 sites including full hook-ups, water/electric, pop-ups, and tent area with picnic tables and fire rings. Pool, playground, laundry room, camp store, and dog walking trail onsite.

## 14 Lantern Resort (The)

571 Presidential Highway, Jefferson, NH 03583 • (603) 586-7151  
info@thelanternresort.com • www.thelanternresort.com

*The Lantern Campground is set in the meadows and among the trees. Relax and enjoy a fun, family place with nightly activities right in the heart of the White Mountains.*

**Directions** 4 ½ miles west of Route 115, 6 miles east of Route 3

**Amenities** 90 large, grassy sites, 3-way and 2-way hookups plus tenting area, many large pull-thru sites with full hookups, 50-amp, dump station, modern facilities, 2 heated pools, kiddie pool, playground, laundry, video arcade and camp store, pavilion, family activities night, and free Wi-Fi.

SEE LISTING ON PAGE 54

Convenient to many of New Hampshire's finest attractions!



*Family Camping in  
the White Mountains*

**603-786-2900**

- Spacious wooded sites for RV's and Tents
- Full Hook-ups with Cable TV • Pool
- Riverfront Tent Sites • Planned Activities
- RV Rentals • Dog Park • Basketball Court
- Wireless internet access available
- Pedal Go-Kart Track and Rentals



Easily accessible from both I-93 & I-91. Rt. 25 to 29 Pinehaven Campground Road, Wentworth, NH 03282  
info@pinehavencampground.com • www.pinehavencampground.com • Follow us on Facebook



*No Highway Noises - Just The Sound Of Nature*

*White Mtns, New Hampshire*

# MOOSE HILLOCK

*Camping Resort*




**Swim in Our Famous  
Blue Lagoon**

**"Tropical Swimming Pool"**

**#1  
Family  
Resort**

**The LARGEST HEATED Campground  
Swimming Pool in New England!**

**The Heated Pool features an  
Authentic Spanish Galleon where  
you can swim inside the belly of the  
ship and view the Treasure Room,  
a Waterfall Cave, 2 Water-slides,  
and a Poolside Cafe!**

Like us on 

**[www.moosehillock.com](http://www.moosehillock.com)**

**LARGE PRIVATE CAMPSITES  
Exclusive Tenting Area!**



- Fit ANY size RV with room to spare
- 20/30/50 amp electric, water, sewer, cable TV & a large natural stone fireplace



**RESERVATIONS (603) 764-5294 • 96 Batchelder Brook Road, Warren, New Hampshire 03279**



## 15 Lincoln/Woodstock KOA Campground



1000 East Side Road, Woodstock, NH 03293 • (603) 745-8008  
woodstockkoa1@gmail.com • koa.com/campgrounds/woodstock  
*51 years of amazing camping experiences, where our customers soon become our friends. Our award-winning park has been noted as "A Diamond in the Woods". 100 Acres of Fun!*

**Directions** Exit 31 to Eastside Road (Rt 175) South 2 Miles

**Amenities** Tent in the wilderness or on a grassy site, some perfect for hammock camping. RVer's choose pull-thru or back-in sites offering 2,3-, or 4-way hook-ups, some offering patios, patio furniture, a Webber gas grill, and a log swing or special seating option. Our soft rugged campers will appreciate our selection of cabins; Deluxe Cabins, a Tree Cabin, and a "Couples" Cabin which offers many cozy features. Children and adults will want to explore the many "free spirit" activities we offer. We are a pet-friendly park. Check out our Kamp K9 dog park and kennels. Groups are welcome; inquire about our function tent for your next gathering. Pool, Wi-Fi, fire truck rides, water slip n slide, jump pad, disc golf, on site mini golf, fishing pond (no license required), walking trail to the river and pond, and multiple sports equipment and games are available.

**SEE AD ON PAGE 54**

## 16 Littleton/Franconia Notch KOA

2154 Route 302, Lisbon, NH 03585 • (603) 838-5525 • 800-562-5836  
littleton@koa.com • www.koa.com/campgrounds/littleton/  
**Directions** Take exit 42 on I-93 and turn left on 302. We are 5 miles on the left. Take exit 17 on I-91 and follow 302 east. We are about 18 miles on the left.  
**Amenities** Riverside camping, tent sites, large pull-thru sites, 4-way hookups, 20/30/50-amp service, tables & firepits, Camping Cabins, cabins with bathrooms, Pancake breakfasts (Saturdays), cable, modern facilities, heated pool, game room, Wi-Fi, camp store, playground, great people, fun times.

## 17 Lost River Valley Campground

951 Lost River Road, North Woodstock, NH 03262 • (603) 745-8321  
info@lostriver.com • www.lostriver.com  
*A heavily wooded campground surrounded on three sides by National Forest, and nestled between the banks of Lost River and Walker Brook, our well-maintained and wooded sites offer the utmost in tranquility while remaining so close to many of the region's most popular attractions.*  
**Directions** From Interstate 93 turn right going north or south off exit 32 and go 4 miles. From Interstate 91 turn on Hwy 112 off Hwy 302 and go 18 miles.  
**Amenities** Offering over 100 spacious sites, including tent, RV, camping cabins, and our newer glamping cabins with kitchens and private bathrooms that sleep up to six people. Many sites are riverside, with drinkable water, tables, and firepit on sites, electricity options include 20/30/50 amp (except our primitive sites). RVs up to 40' max length are accommodated in our wooded sites, seasonal and mountain sites available accommodating RVs up to 55'. The campground provides abundant hiking and trout fishing opportunities, a small general store, modern restrooms with hot showers, and is pet-friendly, LP gas, swimming, fishing, playground, and a recreation room. Limited handicapped facilities are available.

## 18 Maple Haven Campground

109 Lost River Road, North Woodstock, NH 03262 • (603) 745-3350  
info@maplehavencampground.com • www.maplehavencampground.com  
*Maple Haven is a small friendly campground surrounded by the mountains but only 1/4-mile walking distance to the town of North Woodstock. Wooded, river, and RV sites available. Maple Haven is "camping the way it used to be."*  
**Directions** Exit 32 off 93: Turn right on Rt 112 W go about 1 mile. Campground is on the left.  
**Amenities** 100 sites. Some rustic, W/E, dump station. Group sites available. Pond for swimming and fishing, playground, horse shoes, volleyball, Rec Hall with games. Cottages available. PETS ON LEASH.

## 19 Moose Hillock Camping Resort-NH



96 Batchelder Brook Road, Warren, NH 03279 • (603) 764-5294  
nhinfo@moosehillock.com • www.moosehillock.com  
*Offering the largest and most private campsites in the Northeast!*  
**Directions** From North I-93 take exit 26 to Route 25W, approximately 20 minutes to Route 118N 1 mile. From South I-93 take exit 32 to Route 112W, 2 miles to Route 118S for 12 miles. From West, I-91 Exit 15 to Orford, NH, Route 25A 15 miles to Route 25W 7 miles to Route 118N, 1 mile.  
**Amenities** 282 large wooded sites, tent, water/electric and water/electric/septic, Cable TV, 20/30/50-amp service, camping cabins, modern facilities (handicap), dump station, playground, tables and fireplaces, camp store, LP gas, laundry, pavilion, recreation barn, basketball, volleyball, horseshoes, fishing, hiking, heated pool with beach entry, waterfalls, and waterslides.

**SEE AD ON PAGE 51**

## 20 Mountain Lake Camping Resort



485 Prospect Street (Route 3), Lancaster, NH 03584 • (603) 788-4509  
www.mtnlakecampingresort.com  
*"EXPERIENCE THE DIFFERENCE" THE CAMPGROUND EVERYONE IS RAVING ABOUT. Mountain Lake is located just 10 minutes from Santa's Village and within 30 minutes to all other White Mountain attractions.*  
**Directions** Rte 3 between Lancaster & Whitefield, 4 mi. south of Lancaster  
**Amenities** 100 open, wooded or lake view sites. Big rigs and tents welcome. Wi-fi, picnic table and fire pit at every site. Free hot showers, dump stations, large camp store, laundry, LP gas (metered), ice, wood, recreation hall, playground, life-sized chess and checkers, shuffleboard, arcade, doggie park, nature trail, heated pool with waterslides, lake, canoe, kayak and pedal boat rentals, fishing dock, doggie dock, swim dock, log cabins and tipi rentals. Pets are allowed with restrictions.

**SEE AD ON PAGE 56**





1



2



3



4



5



6



7



8

# MAKING MEMORIES? IT'S IN OUR NATURE.



Explore our  
legendary  
attractions &  
adventures!

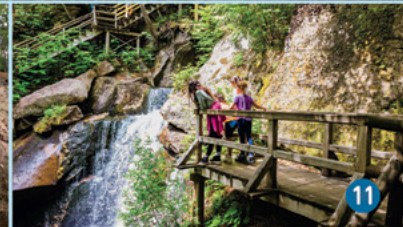
[VISITWHITEMOUNTAINS.COM](https://www.visitwhitemountains.com)



9



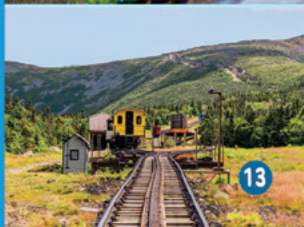
10



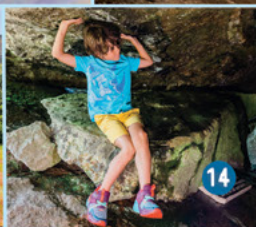
11



12



13



14



15



16



17





## LINCOLN / WOODSTOCK HOLIDAY KOA

During your White Mountain visit, you will soon learn why we are described as a

"Diamond in the Woods Park!"

**"GET OUTDOORS SMORE"**

### To one of America's Premiere Vacation Playgrounds

Numerous adventures await you, such as Hiking, Biking, Walking Trails, Kayak/Canoe and ATV rentals, Moose Tours, Ziplines, Glacial Caves, Scenic By-ways, Golf Courses, Rock Climbing, Horseback riding, Swimming holes with Natural rock water slides and so much more.



**RV / TENT SITES - GLAMPING TENT - PRAIRIE WAGON - DELUXE, BASIC AND TREE CABINS**



**WE MADE IT EASY TO GET HERE AND YOU WILL NOT WANT TO LEAVE.**

**I 93 EXIT 31, 2 MILES SOUTH ON EAST SIDE ROAD ( RT. 175)**

**bbkoa1@roadrunner.com**

**1-800-562-9736**



## 21 Pine Haven Campground



**Enjoy our large, well-spaced sites and family atmosphere!**

29 Pinehaven Campground Road, Wentworth, NH 03282 • (603) 786-2900  
info@pinehavencampground.com • www.pinehavencampground.com

Located along the beautiful Baker River, Pine Haven's large, well-spaced sites can accommodate all types of camping from tents to 50' RVs. We offer quiet family camping in a relaxed, friendly atmosphere. New to Pine Haven? Be sure to visit our YouTube channel to view a short video about our campground.

**Directions** 12 miles west of Plymouth, I-93 exit 26, Route 25, or I-91 exit 15, take SN ½ mile, turn right over bridge, turn right onto 105, ½ mile turn left onto Route 25A to Route 25, turn right onto 25 for 3 miles.

**Amenities** 119 large, spacious, wooded sites, W/E/S, seasonal sites available, riverfront tenting, free Wi-Fi/cable TV on many sites, camp store, clean restrooms and showers, large covered pavilion, pedal go kart rentals and track, softball field, swimming pool, full basketball court, laundry room, 3 playgrounds, horseshoes, LP gas, dump station, picnic tables, fire rings and dog park.

**SEE AD ON PAGE 50**

## 22 Plymouth Sands Campground

3 Quincy Rd, Plymouth, NH 03264 • (603) 536-2605

www.plymouthsandscampground.com • plymouthsandscampground@gmail.com

*Plymouth Sands Campground: Your Basecamp for Adventure. Nestled in the heart of New Hampshire, where the White Mountains meet the Lakes Region, Plymouth Sands Campground is the perfect getaway for outdoor enthusiasts. Located on the Baker River, our family-owned campground features nearly a half-mile of sandy beach access and crystal-clear waters. Enjoy a classic New Hampshire river experience!*

**Directions** GPS Address: 3 Quincy Rd, Plymouth, NH 03264

*From the South (I-93) & Plymouth Area:* Take I-93 to Exit 26, following signs for NH-25 West (Tenney Mountain Highway) towards Rumney. Drive approximately 4 miles on NH-25 West, passing the Rumney village area. Turn Left onto Smith Bridge Road. (This road becomes Quincy Road). Drive through the Smith Covered Bridge #44. Continue on Quincy Road. R.M. Piper Construction will be on your Left. Plymouth Sands Campground is immediately after Piper Construction on your Left, directly across from Fairgrounds Rd.

*From the West (Vermont) & Rumney Area:* Follow NH-25 East (Tenney Mountain Highway) towards Plymouth. Turn Right onto Smith Bridge Road. (This road becomes Quincy Road). Drive through the Smith Covered Bridge #44. Continue on Quincy Road. R.M. Piper Construction will be on your Left. Plymouth Sands Campground is immediately after Piper Construction on your Left, directly across from Fairgrounds Rd.

**Amenities** Relax on the sand, swim, fish, or launch your float, kayak, or paddleboard for a leisurely trip downriver. For land activities, we offer volleyball, bocce, and are just minutes from the famous Rumney Rocks rock climbing and hiking area. We offer a variety of sites, including tent sites and RV sites with water/electric hookups, as well as seasonal options. We're open from Memorial Day Weekend to Indigenous Peoples' Day (mid-October). **Amenities & Highlights:** Riverfront sandy beach for swimming and relaxation Tubing/floating access (near NH covered bridge #44) Picnic tables and fire rings Volleyball and games. Close proximity to Rumney Rocks, hiking, and the White Mountain National Forest



## White Mountains • Family Camping on the Baker River • 603-764-9380



Cabin Rentals



Gemstone Panning

### Close to Most White Mountain Attractions!

- Heated In-Ground Pool
- Two Playgrounds
- Excellent Fishing
- Recreation Hall
- Store • Propane
- Laundry
- FREE Wi-Fi



625 sq. ft. Splash Pad

## Scenic View Campground



Woodall's Rating: 4 / 4 18 Gingerbread Lane Warren NH 03279  
visit [www.scenicviewnh.com](http://www.scenicviewnh.com) • email: [info@scenicviewnh.com](mailto:info@scenicviewnh.com)

### 23 River Meadow Campground

3125 Dartmouth College Highway, North Haverhill, NH 03774  
(603) 787-6700 • [www.rivermeadowcampground.com](http://www.rivermeadowcampground.com)

*Campsites and Cabins nestled along the beautiful banks of the Connecticut River, in the small quaint town of North Haverhill. Only 30 minutes to the beauty and attractions of the White Mountains.*

**Directions** Entrance is on Route 10, Dartmouth College Highway, North Haverhill, NH

**Amenities** Located on the Connecticut River, kayak and canoe rentals, fishing, heated pool, jacuzzi, playground, and activities.

### 24 Riverside Camping & RV Resort

94 Bridge Street, Lancaster, NH 03584 • (603) 631-7433

[manager@riversidecampingnh.com](mailto:manager@riversidecampingnh.com) • [www.riversidecampingnh.com](http://www.riversidecampingnh.com)

*Located on 75 acres bordering the beautiful Connecticut and Israel Rivers; enjoy boating, fishing, tubing, kayaking, wading, swimming, and sunning! Near all major northern NH attractions.*

**Directions** Located on Route 2 at NH/VT border. Coming north through Lancaster, take left at Main Street circle and follow Route 2 for 1/3 mile. The sign and entrance are on your left. Coming north on Route 2 in Vermont, take right on Route 2 to NH. Cross the bridge and the campground entrance is a ¼ mile on your right.

**Amenities** Large, level 30 and 50-amp sites, including river-front sites and pull through sites, laundry, LP gas, and strong Wi-Fi. Enjoy our heated swimming pool, new 60-foot-long dock in the river, entertainment pavilion with weekend activities, new pickleball court, beautiful mowed nature trails, bingo, playground, Israel River beach, shuffleboard courts and tournaments, canoe rentals, corn hole and more!

SEE LISTING ON PAGE 57

One Location. Endless Possibilities.

**SACO RIVER**  
FAMILY CAMPING

### North Conway's Premier Family Camping Destination!

Family-owned campground nestled in the beautiful White Mountains of New Hampshire with nearly 2,000ft of frontage on the Saco River. Whether you are looking for a peaceful camping experience surrounded by nature, busy days filled with adventure or a little of both, a vacation created just for you awaits. Our friendly team and amazing location make Saco River Family Camping the easy choice for your next adventure.

- Big rig-friendly FHU/50-amp sites, riverfront and poolside sites, plus water/electric tent sites
- Full-service cabins, trailers, and huts
- River access with rental boats/floats
- Heated pool, ice cream shop
- Dog parks
- Wi-Fi & cable
- Family fun: two playgrounds, fun cycles, wagon & barrel car rides
- Games & activities
- Walk to North Conway outlets/dining

[www.sacoriverfamilycamping.com](http://www.sacoriverfamilycamping.com)

603-356-3360

1550 White Mountain Highway, North Conway NH





# Mountain Lake Camping Resort



only  
10 minutes  
to Santa's Village!



**603-788-4509** [www.mtnlakecampingresort.com](http://www.mtnlakecampingresort.com)

Route 3, Lancaster, NH 03584





## 25 Saco River Family Camping



Nearly 1,500 ft. of frontage on the Saco River

1550 White Mountain Highway, North Conway, NH 03860  
(603) 356-3360 • info@sacoriverfamilycamping.com  
www.sacoriverfamilycamping.com

North Conway's Premier Family Camping Destination! We offer peaceful camping in a nature filled setting with nearly 1500 feet of frontage along the river. Located within walking distance of downtown North Conway, where you will find local shops, eateries, and tax-free outlet shopping! We truly are in the center of it all! Just moments away from Story Land, Conway Scenic Railway, and more! Families will find we are the perfect location for all your outdoor activities.

**Directions** Follow Rt 16 North to the Southern Junction of Rt 16 & Rt 302. Continue .3 miles on Rt 16. We are located on the left. From the North – Follow Rt 16 south just past the TJ Maxx/Sierra on the right.

**Amenities** Onsite kayaking, canoe, and tube rentals, river access, big rig friendly 50 AMP sites, dozens of sites located directly on the riverfront, full-service cabins, trailers, glamping rentals and more. Wi-Fi, country store, laundry facilities, two playgrounds, two dog parks, outdoor gym, fun cycle rentals, mining sluice, heated pool, free sport equipment rentals & more!

SEE AD ON PAGE 55

## THREE SEASON FUN!

- Where the campsites are lovelier . . .
- Where the river is closer . . .
- Where the ATV trails are close . . .
- Wooded RV Sites – Pull thrus
- Wooded Tent Sites
- Great Mountain Views
- Where the mountains are steeper . . .
- Where the hiking trails are prettier . . .
- Where the biking paths are handier . . .



## White Birches

Camping Park  
Cabin, Trailers & Shelter Rentals  
Hikers Hostel

218 ROUTE 2

SHELBURNE, NH

1 mile east of GORHAM.

603-466-2022



Follow  
Us On  
Facebook



Visit our website: [www.whitebirchescamping.com](http://www.whitebirchescamping.com)  
E-mail: [campwhitebirches@gmail.com](mailto:campwhitebirches@gmail.com)



ATV's  
Welcome  
NH Registration  
Required

Sites Restricted Inquire  
at Time of  
Reservation



Bath, NH – Town of 3 Covered Bridges

Pan for  
GOLD!



Large  
Pavilion

## Twin River Campground and Cottages

Wooded Tent Sites • River Sites  
Large Open Grassy Sites  
Housekeeping Cottages

Riverside and Wooded Rustic Cabins

Scooter's 18 Hole Miniature Golf

Recreation Field • Horseshoe Pit

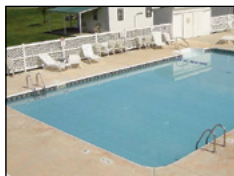
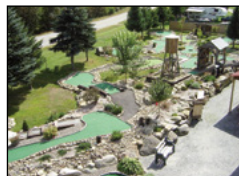
30' x 50' Heated Pool/Kiddie Pool

Tubing • Arcade • Cable TV

Playground • Shuffleboard Court

Full Hookups • 30/50 Amp Sites

FREE Wi-Fi Internet Access



Jct. Routes 112-10-302

P.O. Box 212, Bath, New Hampshire 03740

Your Host: The Solinsky Family

Special Weekends With  
Planned Activities

Weekly, Monthly &  
Seasonal Rates Available

Visit Our Website: [www.twinrivernh.com](http://www.twinrivernh.com)  
or E-mail: [info@twinrivernh.com](mailto:info@twinrivernh.com)

Advanced Reservations Suggested  
(603) 747-3640



WOODALL'S  
INSPECTED & RATED

Gold Panning, Fishing  
and Tubing on the  
Ammonoosuc Rivers



Buy your voluntary N.H.

# Hike Safe CARD

- Supports N.H. Fish and Game search and rescue efforts
- Exempts holder from rescue cost reimbursement\*

*Your  
back-up plan  
in the  
great outdoors!*



Purchase online at:  
**wildnh.com/safe**  
\$25/person or \$35/family

\* (except for intentional or reckless conduct) –  
see [wildnh.com/safe](http://wildnh.com/safe) for complete rules.



New Hampshire  
Fish and Game Department  
11 Hazen Drive, Concord, NH 03301  
(603) 271-3421 • [wildnh.com](http://wildnh.com)



**New Hampshire Fish and Game...**  
*Connecting you to life outdoors.*



## 26 Scenic View Campground

18 Gingerbread Lane, Warren, NH 03279 • (603) 764-9380  
[info@scenicviewnh.com](mailto:info@scenicviewnh.com) • [www.scenicviewnh.com](http://www.scenicviewnh.com)

*Scenic View is a family-owned and operated campground located at the base of the White Mountains. We are located in the small town of Warren, New Hampshire. Conveniently located off both I-93 and I-91, the campground is nestled along the babbling Baker River. The area is often referred to as the "quiet side" of the White Mountains. Stay with us and you will soon see why so many of our guests find this area to be a great resting spot to see the many attractions that the White Mountains Region has to offer.*

**Directions** Points south: I-93 north to exit 26, then 18 miles west on NH Rte. 25 Points north: I-93 S. to exit 32, right on Rte. 112, left on Rte. 118 S, then left on Rte. 25E for 2 miles

**Amenities** Wooded and grassy, riverfront, pull-thru and seasonal sites. Free Wi-Fi throughout, heated pool (Memorial Weekend-Labor Day Weekend), splash pad (Memorial Weekend-Labor Day), basketball court, Gaga ball pit, rec room, horseshoe pits, playgrounds, camp store, laundry, propane filling station, dump station, clean restrooms, and gemstone panning. Cabin rentals and miles and miles of hiking nearby.

**SEE AD ON PAGE 55**

## 27 Timberland Campground

809 US Route 2, Shelburne, NH, 03581 • (603) 466-3872  
[timberlandnh@gmail.com](mailto:timberlandnh@gmail.com) • [www.timberlandcampgroundnh.com](http://www.timberlandcampgroundnh.com)

*We are family owned and offer the perfect getaway for family, friends & reunions. Just minutes from Mt Washington and many attractions.*

**Directions** From South – 993N or 91N to Route 2 West. Take Right on Route 2. 5 mi outside of Gorham NH. 2nd campground on the left. From ME – Route 2 East. 5 mi over the Maine border on the right. Look for the Big Red Firetruck in the driveway.

**Amenities** Naturally, wooded campground: FHU 30/50-amp RV Sites with Cable, Water. Wifi is offered throughout the park. From pop-up trailers to 45' motorhomes. Rental cabins and trailers (many pet friendly options). Our tenting section is nestled in the trees, perfect for your tent or hammock. Propane heated pool 86 degrees (Memorial-mid-September). Bathrooms with hot showers, rec room, and laundry. Camp store has wood, ice, ice cream, soda, beer, wine, and lots more. The pirate ship playground is a hit, horseshoes, corn hole. Enjoy our Riverwalk trails as well as kayaking or tubing down the river. Rentals nearby. Some themed weekends, pot luck dinners and most popular is our Halloween Bash on Columbus Day Weekend! Scheduled fire truck rides. We begin taking reservations in January. Our quiet time is 10pm, strictly enforced. We are not a party spot, Sorry... campground etiquette appreciated.

## 28 Twin Mountain Campground

100 Route 302 E Twin Mountain, NH 03595 • (603) 846-5513  
[info@twinmountaincampground.com](mailto:info@twinmountaincampground.com) • [www.twinmountaincampground.com](http://www.twinmountaincampground.com)

*Twin Mountain Campground is located at the "Four corners to the White Mountains". Featuring 20AMP RV/Tent and primitive tent sites on the half mile of Ammonoosuc River frontage as well as several 30AMP full hookup RV sites and a dump station, your family is sure to find the perfect campsite you're looking for. If you like the feeling of clean, quiet, and secure, then you will enjoy our picturesque, wooded setting surrounded by the panoramic beauty of New Hampshire's White Mountains. The Ammonoosuc River borders the campground, providing sport and beauty for the fisherman and camper alike. Additionally, our campground is located close to nature, 5 minutes from the Cog Railway but also within minutes of recreation and tax-free shopping in North Conway.*

**Directions** In Twin Mountain: Proceed East on Route 302, 1000' from the Route 3 intersection. We are the first business on the right. From 193 North: Take Exit 35 (Route 3). Follow Route 3 North approximately 10 miles to Twin Mountain. From 193 South: Take Exit 40 (Route 302). Follow Route 302 East approximately 10 miles to Twin Mountain. From the West: Route 302. From the East: Route 302 or from Route 2 take Route 115 from Jefferson, New Hampshire, to Route 3, proceed South on Route 3 to Route 302. Turn left onto Route 302.



## 29 Twin Mountain/Mt. Washington KOA

372 Route 115 Twin Mountain, NH 03595 • (603) 846-5559 • 800-562-9117  
twinmountain@koa.com • www.twinmountainkoa.com

*Discover Twin Mountain KOA, your ideal family retreat in the White Mountains! Nestled at 372 Route 115 in Twin Mountain, NH, our campground offers an exceptional escape with stunning mountain views. Start your Sunday morning with our all-you-can-eat pancake breakfast and join in the fun at our ice cream socials. Enjoy a swim in the heated pool, explore our gem mine, or let the kids have a blast on the terrainable rides and large playground, including the Little Cog.*

**Directions** From Rt. 3 & 302, go 2 miles on 3 N, take 115, KOA is on the right. From Rt. 2 take 115, KOA is 10 miles on the left

**Amenities** Engage in friendly games on our basketball and volleyball courts or test your skills at the horseshoe pits. The indoor game room provides entertainment regardless of the weather. Our new amenities include deluxe patio pull-thru sites for big rigs, up to 77 feet, and four deluxe cabins surrounded by beautiful mountains. For a unique experience, stay in our authentic Boston and Maine Caboose. We offer big-rig friendly sites with 50-amp full hookups, free Wi-Fi, and cable TV. For tent campers, enjoy peaceful sites among tall pines, and choose from 22 lodges that fit every family size and budget. Conveniently located just minutes from Mt. Washington, Twin Mountain KOA is your gateway to outdoor adventures and relaxation. For reservations, call the numbers above or visit our website.

## 30 Twin River Campground & Cottages

4 Twin River Lane, Jct. 302 & 112, Bath, NH 03740  
(603) 747-3640 • info@twinrivernh.com • www.twinrivernh.com

*Family run campground in the White Mountains on the junction of 2 rivers.*

**Directions** Exit 17 off I-91, Route 302E 7.5 miles to Junction Route 302 & 112 or I-93 Exit 32, W on Route 112, 21 miles

**Amenities** 90 sites 20, 30, and 50 amp electric, W/E, full hookup, rustic sites, large, open, grassy sites, riverside and wooded sites, cable TV and free Wi-Fi access, full housekeeping, cottages and rustic cabins, laundry, campground store, propane fill station, 30'x 50' heated pool, kiddie pool, gold panning on the Wild Ammonoosuc River, 18-hole miniature golf, game room, children's playground, and tubing on the Ammonoosuc River.

SEE AD ON PAGE 57

## 31 White Birches Camping Park

218 State Route 2, Shelburne, NH 03581 • (603) 466-2022  
campwhitebirches@gmail.com • www.whitebirchescamping.com

**Directions** Located on Route 2, 1½ mi. east of Junction Rte 16 & 2

**Amenities** 110 wooded and grassy sites, full hookups, pull thru and tent sites (wilderness tenting), hikers' hostel, hiking and mountain biking trails, canoe and kayak rentals, table and fireplace, laundry, playground, camp store, recreation room, swimming pool, horseshoes, firewood, ice, modern facilities, cabin, trailer and shelter rentals, propane, and Wi-Fi.

SEE AD ON PAGE 57

New Hampshire *Loves* Campers®

SEE LISTINGS ON PAGE 21 & 60

# CAMPING WORLD®

RV SALES • SERVICE • PARTS • ACCESSORIES



A PAYMENT FOR  
EVERY BUDGET.

AN RV FOR  
EVERY LIFESTYLE.



165 Dover Rd., Rte. 4  
Chichester, NH  
(603) 798-4030

1571 E. Main St.  
Center Conway, NH  
(603) 452-7291



## STATE PARKS

- 32 CANNON MOUNTAIN Franconia, NH
- 33 DRY RIVER Hart's Location, NH
- 34 LAYFAYETTE Franconia, NH
- 35 MOOSE BROOK Gorham, NH

## RV SALES AND SERVICE

### 36 Camping World of Conway

1571 East Main Street, Center Conway, NH 03813

Toll Free 855-530-1773 • [www.campingworldofconway.com](http://www.campingworldofconway.com)

**Directions** Located on Route 302 East in Center Conway, NH. Just 2 miles from Burger King in North Conway.

**Services** Sales & service of travel trailers, fifth wheels, Class A and Class C, 6,400 s.f. parts & accessories store, 8 drive thru service bays, mobile RV repair, LP fill station.

**Hours of Operation** Open 7 days a week in season, Monday- Friday 9-5, Sat 9-4 and Sundays 10-4 (closed Sundays in the winter).

SEE AD ON PAGE 59

## ADVERTISER

### White Mountain Visitor Center

Exit 32, North Woodstock, NH

(800) 346-3687

[www.VisitWhiteMountains.com](http://www.VisitWhiteMountains.com)

SEE AD ON PAGE 53

## NEED A NEW RV ROOF?



**We have the solution!**

### THE ORIGINAL SPRAYED RV ROOF SINCE 2005



A SPRAYED, SEAMLESS, RV ROOF  
GUARANTEED NOT TO LEAK FOR THE LIFETIME OF THE RV

**RVROOF.COM • 508-316-0728**

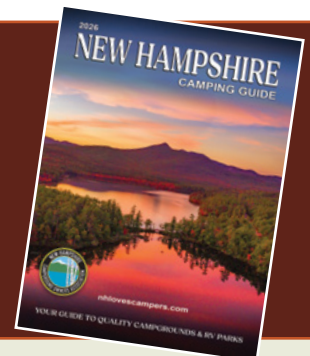
**LIFETIME NO LEAK GUARANTEE!**



New Hampshire *Loves* Campers®

## Advertising

*The Ultimate Guide to reach Campers  
and New Hampshire Visitors!*



### Why advertise in the New Hampshire Camping Guide?

- **The Guide is distributed** at RV & Camping Shows from Florida to Quebec, Travel & Destination Shows, AAA, RV Dealers, In and Out-of-State Information Centers, Retail Outlets, Chamber of Commerce, New Hampshire Travel Association, New Hampshire Division of Travel & Tourism, Member Campgrounds, distribution companies, NeHaCa direct mail program in the US & Canada and everywhere the internet reaches.
- **A trusted FREE resource for over 50 years.** Campers use the guide to locate campgrounds and services and plan their next vacation.
- More New Hampshire and New England residents are using the New Hampshire Camping Guide every year because they are **traveling closer to home.**
- The publication is also available for download on our website, [www.nhlovescampers.com](http://www.nhlovescampers.com), and pushed on our association Facebook, Twitter, and Instagram pages. **The online advertisements are “hot-linked” directly to your website or email address.**
- Advertisements in our publication are invaluable and has allowed us to continue working towards our mission of being the premier camping association and promoting New Hampshire as the #1 destination for camping in New England.

### NEW HAMPSHIRE CAMPGROUND OWNERS' ASSOCIATION

PO Box 1074, 1545 Dover Road • Epsom, NH 03234 • 603.736.5540 • [info@ucampnh.com](mailto:info@ucampnh.com) • [nhlovescampers.com](http://nhlovescampers.com)



# Official 52 With A View List

Over The Hill Hikers began, modestly enough, in the summer of 1979 with a handful of friends hiking past Jose's Bridge in North Sandwich to the rocky ledges at Great Falls for a picnic lunch. In later weeks they would move on to more challenging climbs in nearby peaks of the Sandwich Range in the White Mountains. In 1990, a group of dedicated Over the Hill Hikers formulated a list of some of the most rewarding view hikes in New Hampshire, on peaks with elevations below 4,000 feet. Thus the "52 With a View" list was born.

## Current peaks (2020)

**Sandwich Dome** (3,992 ft.)

**Mt. Starr King** (3,915 ft.)

**Mt. Webster** (3,910 ft.)

**The Horn** (3,900 ft.)

**Shelburne Moriah Mtn.** (3,743 ft.)

**Sugarloaf (Stratford)** (3,703 ft.)

**North Baldface** (3,597 ft.) ≈

**Mt. Success** (3,592 ft.)

**South Baldface** (3,576 ft.) ≈

**Mt. Martha (Cherry Mtn.)** (3,557 ft.)

**Jennings Peak** (3,493 ft.)

**Mt. Chocorua** (3,490 ft.)

**Stairs Mtn.** (3,469 ft.)

**Mt. Avalon** (3,461 ft.)

**Mt. Resolution** (3,426 ft.)

**North Percy Peak** (3,415 ft.)

**Magalloway Mtn.** (3,385 ft.)

**Mt. Tremont** (3,384 ft.)

**Middle Sister** (3,340 ft.)

**Kearsarge North Mtn.** (3,269 ft.)

**Smarts Mtn.** (3,238 ft.)

**North Moat Mtn.** (3,203 ft.)

**Mt. Monadnock** (3,170 ft.)

**Imp Face** (3,165 ft.)

**Mt. Cardigan** (3,149 ft.)

**Mt. Crawford** (3,128 ft.)

**Mt. Paugus (South Peak)** (3,100 ft.)

**North Doublehead / South Doublehead** (3,051 ft. / 2,939 ft.) \*

**Eagle Crag** (3,020 ft.)

**Mt. Parker** (3,013 ft.)

**Mt. Shaw** (2,990 ft.)

**Rogers Ledge** (2,965 ft.) +

**Eastman Mtn.** (2,938 ft.)

**Mt. Kearsarge** (2,935 ft.)

**Mt. Cube (South Peak)** (2,916 ft.)

**Stinson Mtn.** (2,890 ft.)

**Mt. Willard** (2,850 ft.)

**Black Mtn. (Benton)** (2,829 ft.)

**South Moat Mtn.** (2,772 ft.)

**Potash Mtn.** (2,691 ft.)

**Table Mtn.** (2,669 ft.) +

**Blueberry Mtn.** (2,663 ft.)

**Mt. Israel** (2,636 ft.)

**Welch Mountain / Dickey Mountain** (2,598 ft. / 2,722 ft.) \*

**Mt. Roberts** (2,584 ft.)

**Mt. Hayes** (2,573 ft.)

**Mt. Pemigewasset** (2,552 ft.)

**Hedgehog Mtn.** (2,543 ft.)

**Middle Sugarloaf** (2,538 ft.)

**Pine Mtn. (Gorham)** (2,404 ft.) +

**Mt. Morgan** (2,213 ft.) ≈ +

**Mt. Percival** (2,200 ft.) ≈ +

## Key

\* Two neighboring peaks combined into one hike for the list

≈ Two separate peaks on the list but commonly hiked together as a loop

+ Added to the list in 2020

- Removed from the list in 2020

§ Removed from the list in 2001

# Removed from the list in 2010

## Notes

Peaks are listed in order of elevation, highest to lowest.

All summit elevations indicated are per the updated 2019 LIDAR survey data. Thanks to AMC Cartographer Larry Garland.