

south central/merrimack region



IMAGE COURTESY OF KAREN BACHELDER / GREATER MANCHESTER CHAMBER OF COMMERCE

Steeped in rich history, the South Central/Merrimack Valley region is home to New Hampshire's largest cities; Manchester, Nashua, and Concord.

The region is overflowing with museums and historical sites that boast the rich history of the area. Spend a day or more exploring the many scenic byways and picturesque small towns, grab a bite to eat at your choice of an abundance of culinary finds, or catch a live performance at one of its many beautiful theaters. No matter what you chose to do you will not be disappointed visiting the South Central/Merrimack Valley region.

Manchester, the largest city in NH, was once an old mill town positioned on the Merrimack River. One of New Hampshire's hidden gems, Manchester boasts a ton of historical charm, rich culture, arts, museums, and entertainment. Visit the Currier Museum of Art, see a show at the Palace Theatre or learn about the history of the city at the Millyard Museum. Only an hour from Boston, a trip to Manchester will not disappoint.

Many of the other cities in the South Central/Merrimack region are overflowing with museums, entertainment, farms, and amusements that are sure to keep families occupied during their stay. Places include the McAuliffe-Shepard Discovery Center in Concord, Canobie Lake Park in Salem, the Robert Frost Farm in Derry, or spend the afternoon at the Shaker Village in Canterbury where you can take a step back in time and learn about the 200-year-old legacy of the Canterbury Shakers. No matter where you travel in the region you are sure to find plenty to do!

Points of Interest:

- Bear Brook State Park (Allenstown)
- Canobie Lake Park (Salem)
- Canterbury Shaker Village (Canterbury)
- Currier Museum of Art (Manchester)
- McAuliffe-Shepard Discovery Center (Concord)
- Millyard Museum (Manchester)
- The Palace Theatre (Manchester)
- The Robert Frost Farm Historic Site (Derry)

*For more info on
South Central/Merrimack*

Contoocook Chamber of Commerce
www.contoocookchamber.com

Greater Concord Chamber of Commerce
603-224-2508 • www.concordnhchamber.com

Greater Derry Londonderry Chamber of Commerce
603-432-8205 • www.gdlchamber.org

Greater Hudson Chamber of Commerce
603-889-4731 • www.hudsonchamber.com

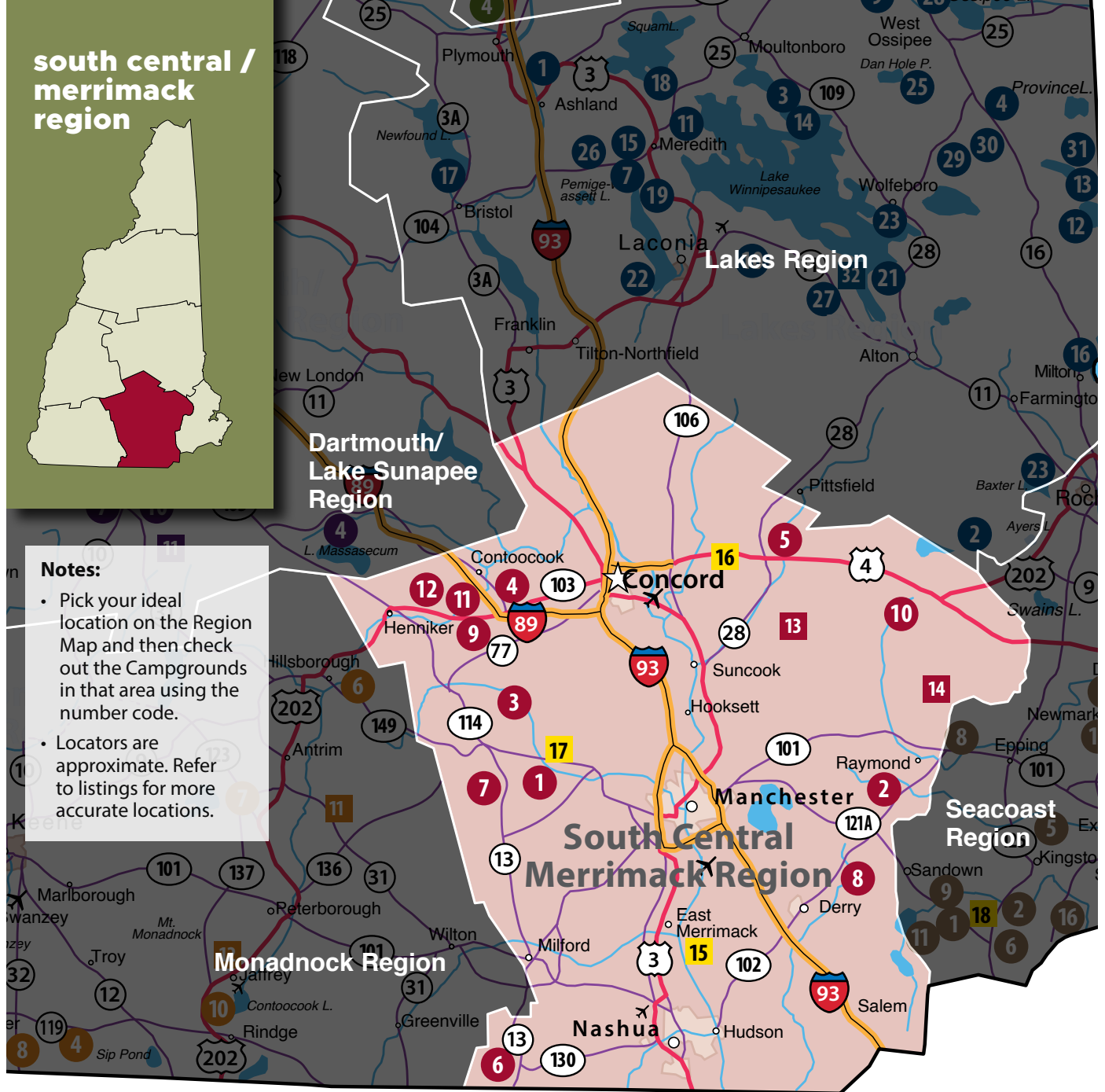
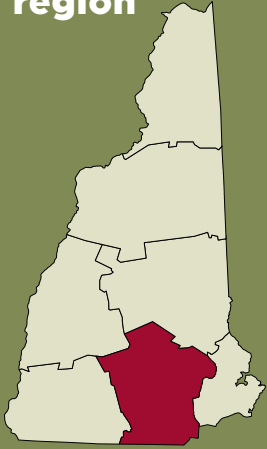
Greater Manchester Chamber of Commerce
603-792-4100 • www.manchester-chamber.org

Greater Nashua Chamber of Commerce
603-881-8333 • www.nashuachamber.com

Greater Salem Chamber of Commerce
603-893-3177 • www.gs chamber.com

Henniker Chamber of Commerce
603-428-3238 • www.hennikerchamber.org

south central / merrimack region



Notes:

- Pick your ideal location on the Region Map and then check out the Campgrounds in that area using the number code.
- Locators are approximate. Refer to listings for more accurate locations.

south central/merrimack region private & state park campgrounds

- 1 Autumn Hills Campground
- 2 Calef Lake Campground
- 3 Cold Springs Camp Resort
- 4 Cozy Pond Camping Resort
- 5 Epsom Valley Campground
- 6 Field & Stream RV Park
- 7 Friendly Beaver Campground
- 8 Hidden Valley RV & Golf Park
- 9 Keyser Pond Campground
- 10 Saddleback Campground
- 11 Sandy Beach RV Resort
- 12 Spacious Skies French Pond

State Parks

- 13 Bear Brook
- 14 Pawtuckaway

RV Sales and Service

- 15 Campers Inn of Merrimack
- 16 Camping World
- 17 Cold Springs RV

Note: When making your camping reservation, be sure to mention that you found your campground in the *2024 New Hampshire Camping Guide!*

For Rates & Reservations, please call the campground or visit the campground's website.

south central / merrimack region private & state park campgrounds		Total No. of Sites	Max RV Length	Hookups W/E/S	Max Amps	Dumping Station	LP Gas / Metered (M)	Seasonal Sites	Tenting	Rental Units	Pets (leashed) (P) / Dog Park (DP)	WiFi (W) / Cable (C)	Laundry	Store	Group Area	Rec Hall (R) / Pavilion (P)	Playground	Swimming	Boating / Water Sports	Marina / Boat Launch	Fishing	Hiking Trails	Bike Trails	ATV Trails	SEASON DATES	
		1	Autumn Hills	135	45	•	50	•	•	•&H	•	P/DP	W	•	•	•	R/P	•	P/N	•	<5	•	<5	•	<5	•
2	Calef Lake	150	45	•	50	•	•	•&H	•	P	W	•	•	•	P	•	N	•	•	•	<5	<10	•	•	5/3-10/14	
3	Cold Springs	400	45	•	50	•	<5	•	•	P/DP	W/C	•	•	•	R/P	•	P/N	<5	<10	•	<5	<5	<5	•	5/1-10/14	
4	Cozy Pond Camping	184	45	•	50	•	•	•&H	•	P	W/C	•	•	•	P	•	P/N	•	<5	•	<5	<5	<10	•	5/12-10/9	
5	Epsom Valley	90	39	•	30	•	<5	•	•&H	P	W	•	<5	•	P	•	N	<10	•	<10	•	•	•	•	5/11-10/14	
6	Field & Stream	54	70	•	50	<10	•	•	•	P/DP	W/C	•	<5	•	P	•	P	<5	<5	•	<5	<5	•	•	Year Round	
7	Friendly Beaver	278	45	•	50	•	•	•&H	•	P	W/C	•	•	•	R/P	•	P	•	•	•	•	•	•	•	Year Round	
8	Hidden Valley	270	45	•	50	•	•	•&H	•	P	W/C	•	•	•	R	•	P/N	•	•	•	<5	<5	<5	•	5/10-10/14	
9	Keyser Pond	117	45	•	50	•	•	•&H	•	P	W	•	•	•	R	•	N	•	•	•	<10	<10	<10	<10	5/1-10/31	
10	Saddleback	26	45	•	50	•	<10	•	•	P	W	•	•	•	•	•	N	<10	•	•	•	•	•	•	5/1-10/31	
11	Sandy Beach	182	40	•	50	<10	•	•&H	•	P/DP	W/C	•	•	•	R	•	N	<10	<10	•	<10	<10	<10	<10	4/29-10/9	
11	Spacious Skies French Pond	138	50	•	50	•	•	•	•	P/DP	W	•	•	•	R/P	•	P/N	•	<10	•	<10	<10	<10	•	1/1-12/17	
STATE PARKS																										
13	Bear Brook	108	35	•	•	•	•	•	•	P	•	•	•	•	P	•	N	•	•	•	•	•	•	•	•	May-October
14	Pawtuckaway	189	35	•	•	<10	•	•	•	•	•	<10	•	•	P	•	N	•	•	•	•	•	•	•	•	May-October
Seasonal rental only		• = Onsite		<5 = Located less than 5 miles from campground										<10 = Located less than 10 miles from campground												
P=Pool, N=Natural, Rental Units (Cabins, Trailer, Yurts, Teepee, etc.), H=Hammock Tenting																										

1 Autumn Hills Campground



285 South Stark Highway, Weare, NH 03281 • (603) 529-2425
 autumnhillscampground@gmail.com • www.autumnhillscampground.com
 Autumn Hills Campground is located in rural Weare, between Manchester and Concord. Autumn Hills is known for its friendly atmosphere with many activities for families and campers of all ages. Planned activities and themed weekends are available on the "CampersApp". Large, shady sites tiered on a wooded hillside. Themed weekends and activities such as LIVE bands, karaoke, dances, barrel train rides, hypnotist, comedy, cornhole, crafts, bingo, pig roast, trivia, and much more! Check out our Gas Saver specials and activities app on CampersApp.

Directions Route 114N, 4 miles north of Goffstown between Manchester and Concord

Amenities 135 sites with 97 water, electric, and sewer for RVs, popups and tents, 2 rental trailers, tables and firepits. New this season - Wi-Fi throughout the park! Activity field, pavilion for activities and private events, horseshoes, playground with swings, pool, fishing, golf cart rentals, boat rentals, dog park, camp store, ice, wood, beer and wine, LP fill station, laundry facility, and lake views. Reserve online today!

SEE AD ON PAGE 29

2 Calef Lake Campground

593 Chester Road, Auburn, NH 03032 • (603) 483-8282
 contact@caleflakecampground.com • www.caleflakecampground.com
 Calef Lake Camping Area is a family owned and operated campground located in scenic Southern New Hampshire. Our south-central location is close to a variety of destinations in NH, Southern Maine, and Massachusetts. Destinations include Hampton Beach, amusement and water parks, premium outlets, NHRA and NASCAR race tracks, The White Mountains, and Lakes Region. Come visit us and enjoy what New Hampshire has to offer. Campground offers weekly activities for kids and adults!

Directions 7 miles southeast of Manchester on Route 121. I-93 to Route 101E, take Exit 2, drive south on Route 121 5 miles, entrance on left

Amenities Over 150 wooded sites including premium full hook-ups WSE, standard full hook-ups WSE, and rural tent sites. We offer rental units: lake house that sleeps 7+, luxury glamping tents that sleeps 4-6, and cabins that sleep 4-6. Rental units include a gas grill, fireplace, and are fully furnished. The campground also offers laundry, store, ice, wood, large beach, great fishing, volleyball and basketball courts, two playgrounds, and canoe, boat, paddle boards and paddle boats rentals.



New Hampshire's nickname is "The Granite State" because it once had a large industry surrounding the quarrying of granite.



"You don't have to go far, to be away."

285 S Stark Hwy, Weare, NH • 603-529-2425
Reserve Online @ www.autumnhillscampground.com

- ▶ Beautiful, spacious, wooded campsites
- ▶ Propane, Wood, & Ice on-site
- ▶ Free WiFi available
- ▶ Pet Friendly & a Dog Park!
- ▶ New Playground & Swingset!
- ▶ Relax by the pool or fish at the lake
- ▶ Small family owned campground
- ▶ RV Rentals Available
- ▶ LIVE Entertainment
- ▶ Activities & Theme Weekends
- ▶ Close to main attractions like SNHU Arena, Outlet Malls, NH Motor Speedway and Canobie Lake Park

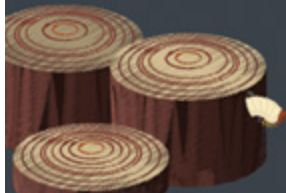


***Check out our Weekday Special**
Buy 2 Nights, Get the 3rd Night Free!
(Sunday - Thursday)



Protect Trees From Pests

**BUY IT WHERE YOU
BURN IT**



dontmovefirewood.org

3 Cold Springs Camp Resort



62 Barnard Hill Rd, Weare, NH 03281 (right off of Rt. 114) • (603) 529-2528
info@coldspringscampresort.com • www.coldspringscampresort.com

We are a destination family camp resort located in South Central New Hampshire situated on 108 acres and have 400 large RV sites including 12 cabin rentals. Our resort is big rig friendly with most sites having 5-way hookups. Throughout the entire park you will find free WiFi, modern restrooms, paved roads, and beautiful landscaping. Cold Springs Camp Resort is known for our large pool complex that includes an adult pool, sports pool, enormous pool for ages 5 & up, family pool, kiddie pool, kids' hot tub and an adult hot tub. Our main building includes; Camp Store, Campfire Cafe, arcade, movie room, rec hall for ages 13 & up, and a laundromat. Cold Springs Camp Resort offers activities for all ages including; themed weekends, live entertainment, crafts, hayrides, fire engine rides, bingo, oversized chess board, cornhole, shuffleboard, horseshoes, darts, and cribbage. Our facilities include; sports field, basketball court, volleyball court, bocci court, horseshoe courts, shuffleboard court, dart boards, playground, outdoor fitness stations and a dog park. We look forward to your stay with us! Reservations are recommended.

Some of our favorite attractions!

10-20 minutes away: great restaurants, golfing, bike & hiking trails, sports fields and Horace Lake (water sports & public beach).

30-60 minutes away: Mall of NH, outlets (tax free), SNHU Arena, NH Motor Speedway, Hampton Beach (restaurants & boardwalks) and Canobie Lake Amusement Park.

60-90 minutes away: Weirs Beach (Laconia Bike Week & Mt. Washington Cruise Ship), White Mountains, Flume Gorge, Castle in the Clouds, Boston (TD Garden, Fenway Park, Museum of Science, Museum of Fine Arts, New England Aquarium & Faneuil Hall Market Place).

SEE AD ON PAGE 3

4 Cozy Pond Camping Resort

541 Battle Street, Webster, NH 03303 • (603) 428-7701
info@cozypond.com • www.cozypond.com

Cozy Pond Camping Resort is located in the small New England town of Webster, NH, which makes it an ideal location for someone looking to get away. We have large, beautifully wooded, and open sites. At Cozy Pond you can reconnect with the important things in life: relaxing with your family and friends and eating all the s'mores you want. Forget your marshmallows? There is a well-stocked camp store with everything you might need, from ice and firewood, to beer and fresh butchered grilling meats, and everything in between. Whether you're looking for a weekend trip or a summer getaway, Cozy Pond Camping Resort is the place for you.

Directions 5 minutes off I-89, Exit 7, east on Route 103 0.8 mile, then north on Route 127 3.2 miles, campground is on the left.

Amenities 184 sites most with water/electric/septic, fire ring, and picnic table. Free Wi-Fi and cable, laundry, dump station, well stocked store, LP gas refill station, free showers and restrooms, large pavilion for activities and crafts, basketball, volleyball, bocce, horseshoes, shuffleboard, mini golf, Frisbee golf, pool and large pond for swimming, canoeing, kayaking, and fishing. Nearby hiking trails and rivers for canoeing and kayaking. Pets and big rigs welcome.

SEE AD ON RIGHT

5 Epsom Valley Campground

990 Suncook Valley Highway, Epsom, NH 03234 • (603) 736-9758
epsomvalley@verizon.net • www.epsomvalleycampground.com

Epsom Valley Campground is a family owned and operated campground located in the heart of beautiful New Hampshire. Only 20 minutes east of Concord, and 90 minutes north of Boston, we offer the quiet, relaxing atmosphere New Hampshire is famous for. A variety of attractions are available nearby. Come and enjoy our shady or sunny sites. We offer rustic camp sites as well as camping sites with 3-way hookups, a large group camping area, take a book/leave a book free library, laundry facilities, and large pavilion.

Directions From Interstate 93: Take Exit 15E in Concord, NH and proceed east on routes 393 to 4 & 202. At Epsom Traffic Circle, go north on Route 28. Our campground is located 1,500 feet north of the Epsom traffic circle on the right.

Amenities 80 spacious tent and trailer sites in tall pines and open grassed areas, modern facilities, laundry, swimming, fishing, canoe and kayak rentals, canoeing, mini golf, badminton, volleyball, ice, wood, free Wi-Fi, and group area.

6 Field & Stream RV Park

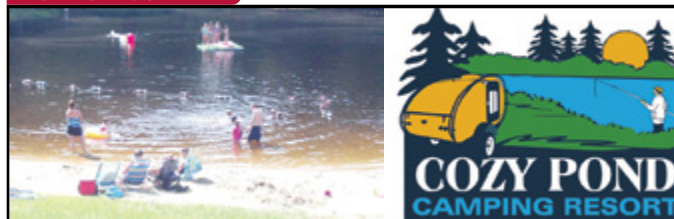
7 Dupaw Gould Road, Brookline, NH 03033 • (603) 673-4677
info@fsrvp.com • www.fsrvp.com

Catering to the Mature RVer. Located just 3 miles north of Massachusetts and ten miles west of Nashua. Free Wi-Fi and cable TV, paved sites.

Directions From Mass line take Rt. 13N to 2nd yellow blinking light, turn L onto Mason Rd. From Nashua take Exit 6 off Everett Tpk, Rt. 130 W to Rt. 13S, turn L, go 1 mi to yellow blinking light, turn R onto Mason Rd.

Amenities Sites 20/30/50 amp, all with W/E/S, cable TV, wireless internet, modern facilities, laundry, tables, LP, private pond, fishing, PETS ON LEASH. Open year round (limited winter by appointment only).

SEE LISTING ON LEFT



5 Acre Recreational Pond
Pet-Friendly
Camp Store
Game Room
Wooded and Open Sites



Big Rigs Welcomed
Free Cable and Wi-Fi
Large Pavilion
Volley Ball
Playground
And So Much More!



541 Battle Street
Webster,
New Hampshire
03303
(603) 428-7701
info@cozypond.com
www.cozypond.com

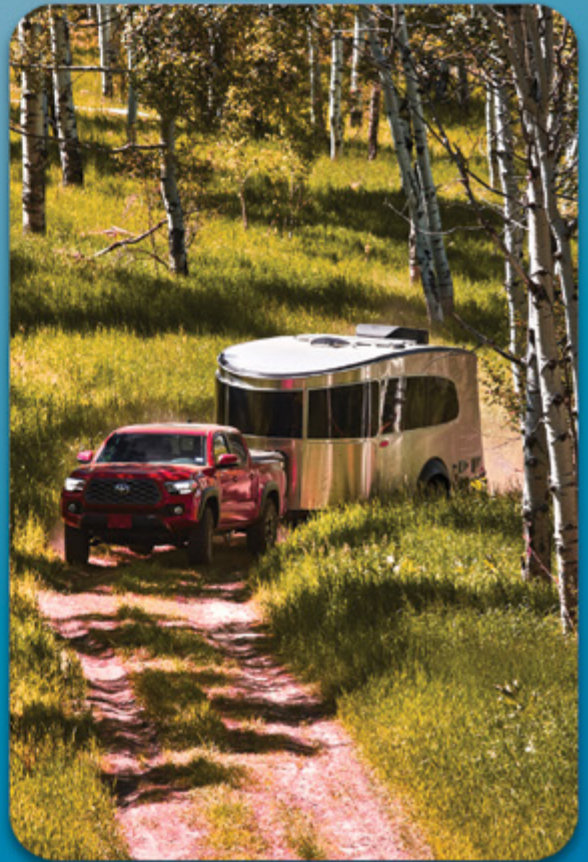


AIRSTREAM

Nashua, NH • Lebanon, ME



NH & ME's Exclusive Airstream Dealers!



**New Models • Pre-Owned Models • Parts & Service
Financing • Storage • Body Shop & Repair**

Airstream of Nashua
233 Main Dunstable Road
Nashua, NH 03062
603.880.0032
AirstreamOfNashuaNH.com



Airstream of Lebanon
1545 Carl Broggi Highway
Lebanon, ME 04027
207.339.0032
AirstreamOfLebanonME.com

7 Friendly Beaver Campground



Super playground and four awesome pools!



88 Cochran Hill Road, New Boston, NH 03070 • (603) 487-5570
reservations@friendlybeaver.com • www.friendlybeaver.com
OPEN YEAR ROUND

Directions Take I-93N to I-293, then take Route 114 until you come to the junction of Route 13, take a left onto Route 13 bringing you into New Boston. Take a left at the second stop sign then your next right onto Old Coach Road, entrance in about 2 miles. If using a GPS, please enter the address 298 Old Coach Road, New Boston, NH 03070.

Amenities Wooded and open sites, table and fireplaces, water, electric, sewer/ dump station/on-site pump-outs, cable, free Wi-fi in the buildings, or \$\$ at sites. The largest camp store in NH includes wood, ice, ice cream, snacks, and more. Covered pavilion, 2 laundry areas including XL machines. Modern individual restrooms are fully tiled. Heated indoor pool that is open year-round. Outdoor 40' swimming pool, 40' sports pool, 32' wading pool with waterspouts, 8 gazebos, 2 playgrounds, adult recreation hall, teen rec hall with video game plug-in stations, and kid's activity room. Both rec halls have TVs with Comcast. The new sports field area includes horseshoes, volleyball, baseball, basketball, and a large group area. Activities every weekend from spring to fall and every day during school summer vacation. Themed weekends including Christmas in July, Family Mardi Gras, Halloween on Labor Day weekend, and more. Pet friendly on leash. May-Oct breakfast served in the adult rec hall.

SEE AD CENTERFOLD ON PAGES 46 & 47

9 Keyser Pond Campground

1739 Old Concord Road, Henniker, NH 03242 • (603) 428-7741
jeneric.keyserpondcampground@gmail.com • www.keyserpond.com
Directions From Concord take I-89N to Exit 5, 4. miles west on Routes 9 and 202, left at blinking yellow light

Amenities Electric, water, and sewer hookups, dump station, modern facilities, recreation hall with fireplace, laundry, playground, LP gas, horseshoes, badminton, mini golf, shuffleboard, corn hole, camp store, tables and firepits, trailer rentals, swimming on 2 beaches, fishing, canoes, paddle board, and kayak. Cabin available four seasons.

SEE AD BELOW

10 Saddleback Campground

41 Campground Road/Route 43, Northwood, NH 03261 • (603) 942-7285
saddlebackcampground@yahoo.com • www.saddlebackcampground.com
Saddleback Campground is a small, family owned and operated campground located away from the hustle and bustle of normal everyday life. From the moment you pull into our driveway, our desire is to make you feel warm and welcome while you enjoy your peaceful stay. All of our campsites have a view of our spring fed pond where you can swim or fish (no license required). Our campsites are very large and naturally shaded by trees. We have sites to accommodate every person's idea of camping, from tents to a 50-foot motor home.

Directions From Route 95 North, take Route 16 North to Route 4 West. Turn left on Route 43 and go 2 miles to Saddleback Campground on the right. From Route 93 North or South, take Route 4 East to Route 43 South on the right. Go 2 miles to Saddleback Campground on the right. From Route 101, take Exit 3/ Route 43 North about 20 miles to campground.

Amenities 26 sites, W/E/S, dumping station, WiFi, laundry, store, pets allowed (leashed), group area, tenting, rental units – trailer, playground, swimming (pond), fishing.

SEE OUR LISTING ABOVE



I-89, Exit 5. Go 4½ miles West on Rtes. 202 & 9 to
1739 Old Concord Road, Henniker, NH, 03242

- Wooded Sites
- Spring Fed Pond
- 2 Swimming Beaches
- Fishing
- Boat Rentals
- Cabin Rentals
- Rec Hall
- Miniature Golf
- Shuffleboard
- Bingo



1-800-272-5221 • 603-428-7741
VISIT OUR WEBSITE: **WWW.KEYSERPOND.COM**

8 Hidden Valley RV & Golf Park

81 Damren Road, Derry, NH 03038 • 603-887-3767
hiddenvalleylv@comcast.net • www.hiddenvalleylvgolf.com

Amenities 270 sites, electric, water, sewer, LP gas, recreation hall, fireplaces, picnic tables, fishing (no license), spring fed lake with beach, salt water swimming pool, corn hole, pickle ball court, weekend activities, camp store, restaurant, lounge, ice, wood, laundry mat, non-denominational church on site, 18-hole championship golf course, 9-hole par 3.

Directions 93 North to Exit 4 East, 2nd right off traffic circle (East Derry Rd), approx. 4 miles, left on Damren Rd to entrance.

Photo courtesy of Jay Philbrick



11 Sandy Beach RV Resort

677 Clement Hill Road, Contoocook, NH 03229 • (603) 746-3591
 sandybeach@equitylifestyle.com
<https://thousandtrails.com/new-hampshire/sandy-beach-rv-camping-resort>
 Sandy Beach RV Resort offers an ideal central location for exploring nearby areas. The White Mountains, New Hampshire's coast, The Lakes Region, and New Hampshire International Speedway are all a short distance away. In addition to the desirable location of this New Hampshire RV resort, Sandy Beach RV Resort offers guests the opportunity for boating, fishing and swimming, as well as amenities like tennis courts, a playground, shuffleboard, and a basketball court.

Directions From West, Rts 202/9 East. Continue past the Henniker, Rt 114 Exit, approx. 5 miles. Left at light (Dunkin Donuts) on Rt 127. Continue past the Hopkinton Dam. Right at fork & Sandy Beach is 1 1/2 miles on the left. From South/North: take I-93 to I-89N. Exit 6 to Rt 127S. Continue approx. 2.5 mi., right over Hopkinton Dam. Right at fork & Sandy Beach is 1 1/2 miles on the left.

Amenities 182 sites w/3-way hookup, some cable sites, 1000 ft. waterfront, beautiful sandy beach, boating and fishing, dances and theme weekends, family activities, 20/30/50 AMP electric, full hook-up sites, laundry, camp store, tables and fireplaces, basketball, tennis, horseshoes, bocce, and washers.

12 Spacious Skies French Pond

479 Old West Hopkinton Road, Henniker, NH 03242 • (862)777-0319
 info@campatfrenchpond.com • www.spaciousskiescampgrounds.com
 Spacious Skies French Pond is a family-friendly campground located in beautiful southern New Hampshire, 5 miles north of Pats Peak. Offering both wooded and open sites that can accommodate any size RV. We have retro camper rentals, tent sites and a rental cottage, there is the perfect spot for every camper. Camp On!

Directions Southbound Exit 6, right off I-89 on State route 127 (Maple Street) approx. 4 miles south on Route 127, cross dam, take 1st right, then left, continue about 1 mile. Northbound Exit 5 (left) off I-89, Route 202 & 9W, 5 miles, right turn on Old West Hopkinton Rd., go 1 mile campground on left.

Amenities Spacious Skies French Pond is nestled deep in the forest, right on French Pond. Beach access offers swimming, kayaking, canoeing, paddle boating, and fishing. Campers can also enjoy the salt water heated pool. A historied pavilion is available for activities, dancing, and more. A rec hall with arcade games, a new playground, and gem mining provide for families. A camp store, laundry facility, propane filling station, and dump station are additional campground conveniences. **SEE AD BELOW**

STATE PARKS

- 13 BEAR BROOK Allenstown, NH
- 14 PAWTUCKAWAY Nottingham, NH

See pages 88 and 89 for more information.

RV SALES AND SERVICE

15 Campers Inn RV of Merrimack

35 Robert Milligan Pkwy, Merrimack, NH 03054
 (603) 883-1082 • www.campersinn.com

Indoor showroom, parts & accessories store, new and used RV's, for brand names see our website, drive-thru service bays, RVIA certified technicians, wheel alignment, trailer hitches, mobile service, NH State Inspections

Directions Everett Tpke Exit 10, NB end of ramp turn right, SB end of ramp turn left, go to end turn right onto Daniel Webster Highway, Route 3 South
SEE AD ON PAGE 91

16 Camping World

165 Dover Road, Chichester, NH 03258 • 800-342-4279
 www.rv.campingworld.com

Sales and service new and used RV's, large indoor showroom and Camping World On-Site Master certified factory trained technicians, hitches sold and installed, NH State inspection station, LP gas (metered)

Directions Route 4 (Dover Road), Exit 15E off I-93
SEE AD ON PAGE 62

17 Cold Springs RV Sales, Service & Parts

530 So. Stark Highway, Weare, NH 03281 • (603) 932-6912
 www.coldspringsrv.com

New and Used RV's, Full Service Facility, Master Certified Factory Trained and RVIA Certified Technicians, Mobile Service, Parts & Accessories Store, Hitches sold and installed, NH State Inspection Station, and LP Gas Fill Station.

Directions Rte 114, 5 miles North of Goffstown
SEE AD ON INSIDE FRONT COVER

SEE OUR LISTING ABOVE




www.spaciousskiescampgrounds.com • (862) 777-0319 • camper@spaciousskiescampgrounds.com



FULL HOOK-UP SITES. 30 & 50 AMPS
MONTHLY SITES / SEASONAL SITES
 CABINS
 PET FRIENDLY
 SWIMMING POOL & SLIDE
 ARCADE
 GAGA BALL PIT
 FISHING

GEM MINING
KAYAK RENTALS
 PLAYGROUND
 HIKING/BIKING TRAILS
 BOAT LAUNCH
 PROPANE/FIREWOOD/ICE
 CAMP STORE

Spacious Skies Seven Maples
in Hancock, NH

FULL HOOK-UP SITES. 30 & 50 AMPS
MONTHLY SITES / SEASONAL SITES
 RETRO RV RENTALS
 WINTER CAMPING
 LAKE BEACH
 GEM MINING. PADDLECRRAFT RENTALS. FISHING
 REC HALL/ARCADE
 PET-FRIENDLY
 PROPANE/FIREWOOD/ICE
 CAMP STORE

Spacious Skies French Pond
in Henniker, NH

